

Data Structure

(Java programming)



Chapter 01.

Contents

- **Java and Eclipse Installation**
- **Eclipse basic tutorial**
- **Simple Java program**

• Java and Eclipse Installation

<http://www.oracle.com/technetwork/indexes/downloads/index.html#java>

Browse by Category:

Java

- **Java SE (includes JavaFX) | Early Access**
- Oracle Java SE Embedded
- Java Card
- Event Processing for Java Embedded
- Oracle Java Embedded Suite
- Java EE & GlassFish Server
- Java Runtime Environment (JRE)
- Java ME
- Oracle Java ME Embedded
- Java ME SDK
- Oracle Java ME Embedded Client
- Java for Mobile
- Java TV

Database

- Database 12c Enterprise/Standard Editions
Including: Client, Grid Infrastructure,
Examples, Gateways, more
- Database 11g Enterprise/Standard Editions
- Database 11g Express Edition
- Audit Vault and Database Firewall
- Berkeley DB
- Big Data Connectors
- ILM Assistant
- Instant Client
- MySQL
- NoSQL Database
- Rdb Products
- R Distribution
- Secure Backup

• Java and Eclipse Installation

Overview Downloads Documentation Community Technologies Training

Java SE Downloads


DOWNLOAD ↓
Java Platform (JDK) 8u121


DOWNLOAD ↓
NetBeans with JDK 8

Java Platform, Standard Edition

Java SE 8u121
Java SE 8u121 includes important security fixes. Oracle strongly recommends that all Java SE 8 users upgrade to this release.
[Learn more](#) ▶

Important planned change for MD5-signed JARs
Starting with the April Critical Patch Update releases, planned for April 18 2017, all JRE versions will treat JARs signed with MD5 as unsigned. [Learn more and view testing instructions.](#)
For more information on cryptographic algorithm support, please check the [JRE and JDK Crypto Roadmap](#).

• Java and Eclipse Installation

Java SE Development Kit 8u121

You must accept the [Oracle Binary Code License Agreement for Java SE](#) to download this software.

Accept License Agreement
 Decline License Agreement

Product / File Description	File Size	Download
Linux ARM 32 Hard Float ABI	77.86 MB	jdk-8u121-linux-arm32-vfp-hflt.tar.gz
Linux ARM 64 Hard Float ABI	74.83 MB	jdk-8u121-linux-arm64-vfp-hflt.tar.gz
Linux x86	162.41 MB	jdk-8u121-linux-i586.rpm
Linux x86	177.13 MB	jdk-8u121-linux-i586.tar.gz

Java SE Development Kit 8u121

You must accept the [Oracle Binary Code License Agreement for Java SE](#) to download this software.

Thank you for accepting the Oracle Binary Code License Agreement for Java SE; you may now download this software.

Product / File Description	File Size	Download
Linux ARM 32 Hard Float ABI	77.86 MB	jdk-8u121-linux-arm32-vfp-hflt.tar.gz
Linux ARM 64 Hard Float ABI	74.83 MB	jdk-8u121-linux-arm64-vfp-hflt.tar.gz
Linux x86	162.41 MB	jdk-8u121-linux-i586.rpm
Linux x86	177.13 MB	jdk-8u121-linux-i586.tar.gz
Linux x64	159.96 MB	jdk-8u121-linux-x64.rpm
Linux x64	174.76 MB	jdk-8u121-linux-x64.tar.gz
Mac OS X	223.21 MB	jdk-8u121-macosx-x64.dmg
Solaris SPARC 64-bit	139.64 MB	jdk-8u121-solaris-sparcv9.tar.Z
Solaris SPARC 64-bit	99.07 MB	jdk-8u121-solaris-sparcv9.tar.gz
Solaris x64	140.42 MB	jdk-8u121-solaris-x64.tar.Z
Solaris x64	96.9 MB	jdk-8u121-solaris-x64.tar.gz
Windows x86	189.36 MB	jdk-8u121-windows-i586.exe
Windows x64	195.51 MB	jdk-8u121-windows-x64.exe

• Java and Eclipse Installation

Path 설정

- 시스템 등록 정보 > 고급 시스템 설정 > 고급 > 환경변수 > 시스템변수 > 새로만들기

변수이름 : CLASSPATH 변수값 : %classpath%.

변수이름 : JAVA_HOME 변수값 : C:\Program Files\Java\jdk_x.x.x_xx

시스템 변수의 Path 더블클릭 한 후
%JAVA_HOME%\bin 추가

설치 확인

- 실행 > cmd > java -version

- # Java and Eclipse Installation


<http://www.eclipse.org/downloads/>

GETTING STARTED MEMBERS PROJECTS MORE ▾

Download Eclipse Technology that is right for you

Register Now for Eclipse Converge and Devovx US, in San Jose, CA, March 20-23, 2017

Tool Platforms




Get Eclipse **Neon**

Install your favorite Eclipse packages.


DOWNLOAD 64 BIT

Download Packages



Eclipse Che

Eclipse Che is a developer workspace server and cloud IDE.



ORION

A modern, open source software development environment that runs in the cloud.

• Java and Eclipse Installation

Eclipse Neon.2 (4.6.2) Release for Windows

Try the Eclipse Installer

The easiest way to install and update your Eclipse Development Environment.

Find out more  **2,293,119 Downloads**



Windows

32 bit | 64 bit



Eclipse IDE for Java EE Developers

299 MB 722,115 DOWNLOADS

Tools for Java developers creating Java EE and Web applications, including a Java IDE, tools for Java EE, JPA, JSF, Mylyn...



Windows

32 bit | 64 bit



Eclipse IDE for Java Developers

161 MB 417,913 DOWNLOADS

The essential tools for any Java developer, including a Java IDE, a Git client, XML Editor, Mylyn, Maven and Gradle integration...



Windows

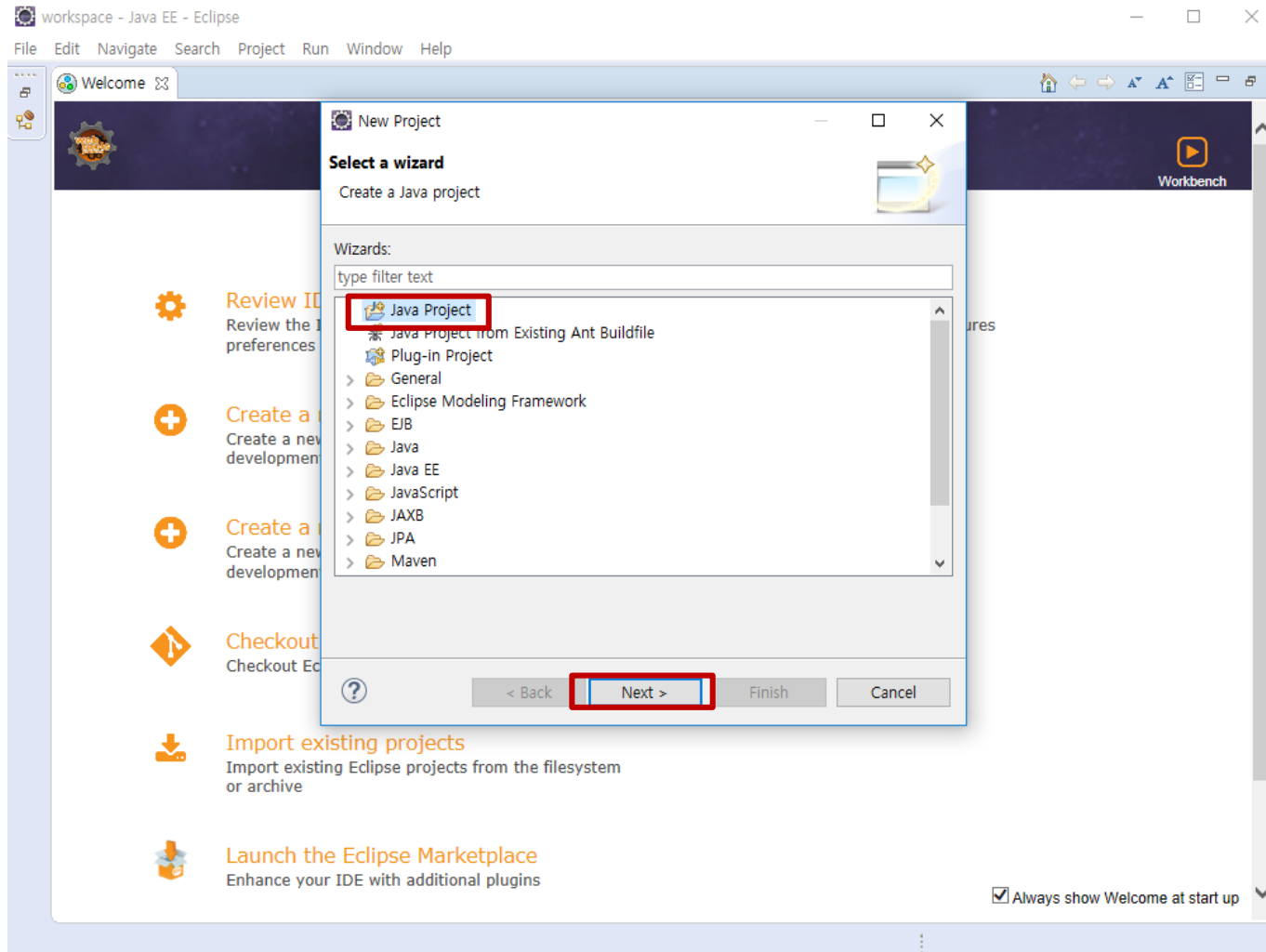
32 bit | 64 bit

- Eclipse basic tutorial

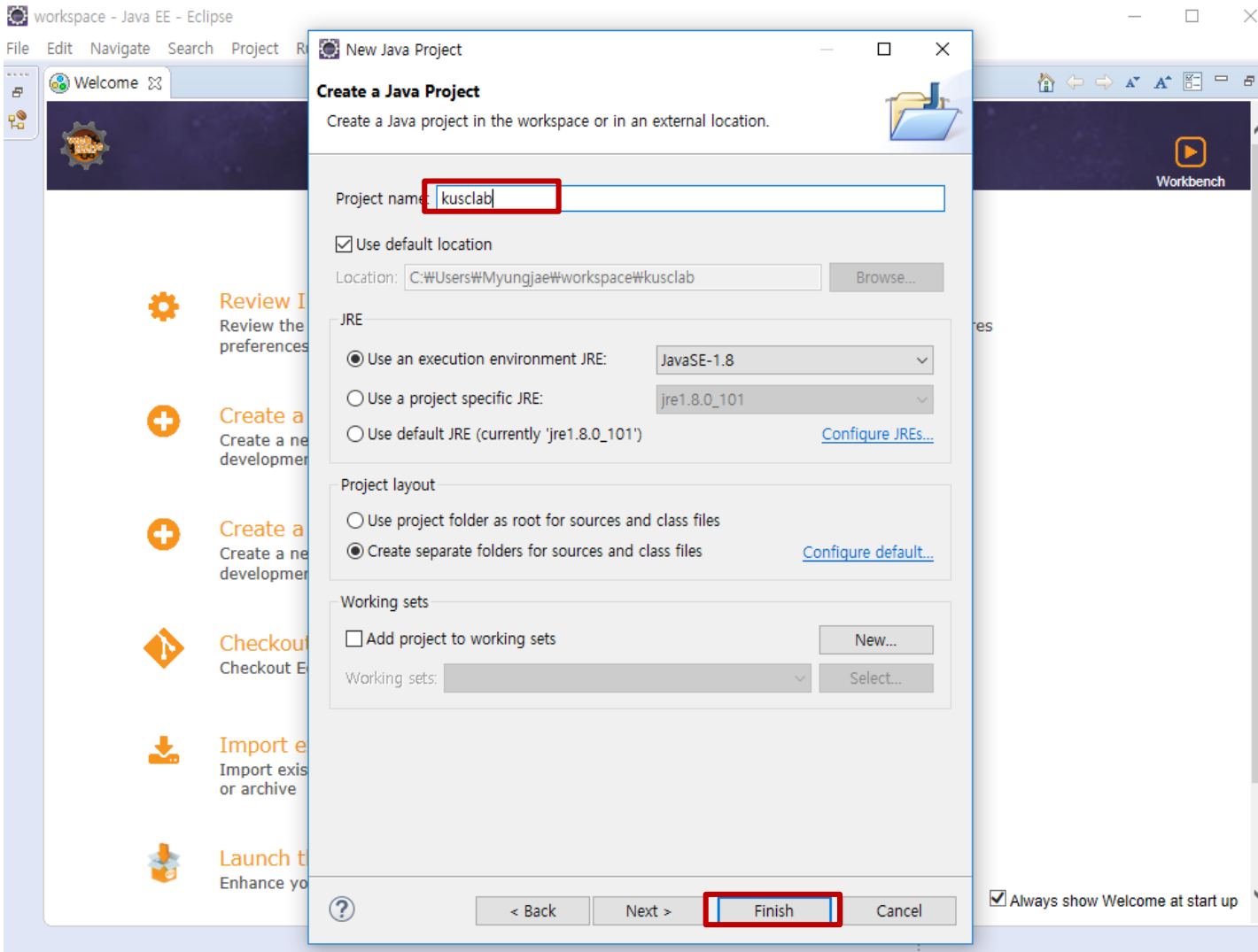


• Eclipse basic tutorial

File → New... → Project

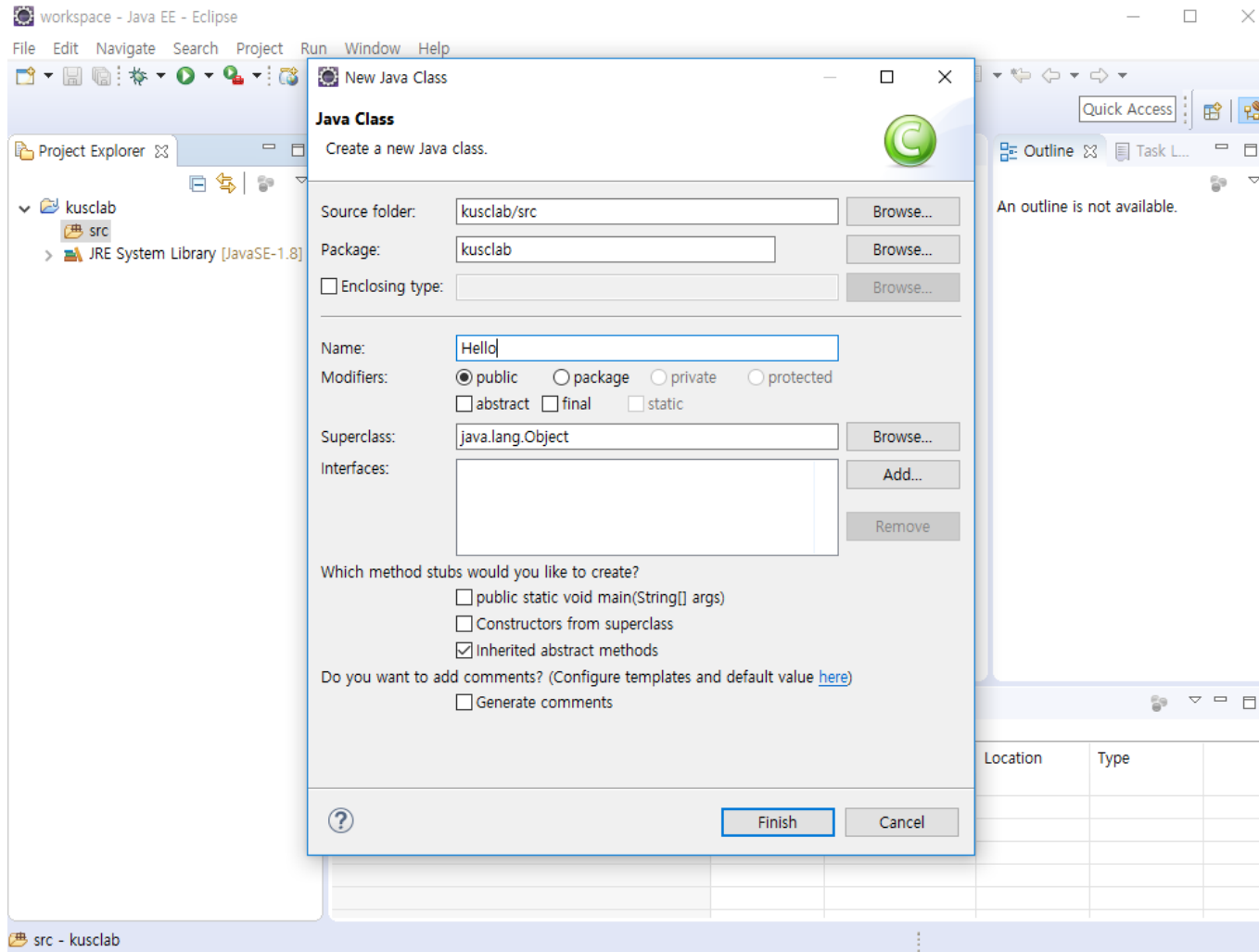


- Eclipse basic tutorial



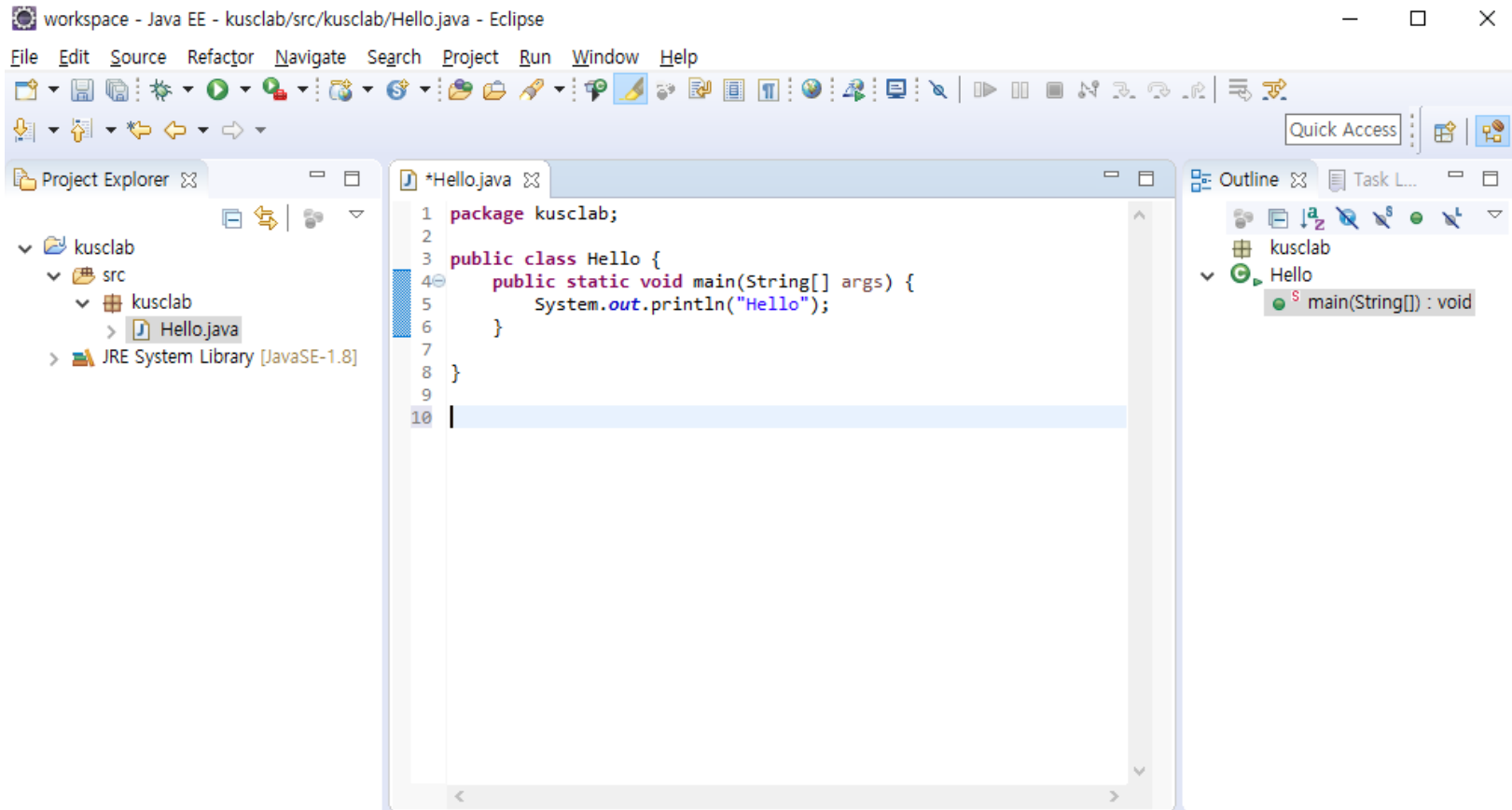
Eclipse basic tutorial

src(Right Click) → New → Class



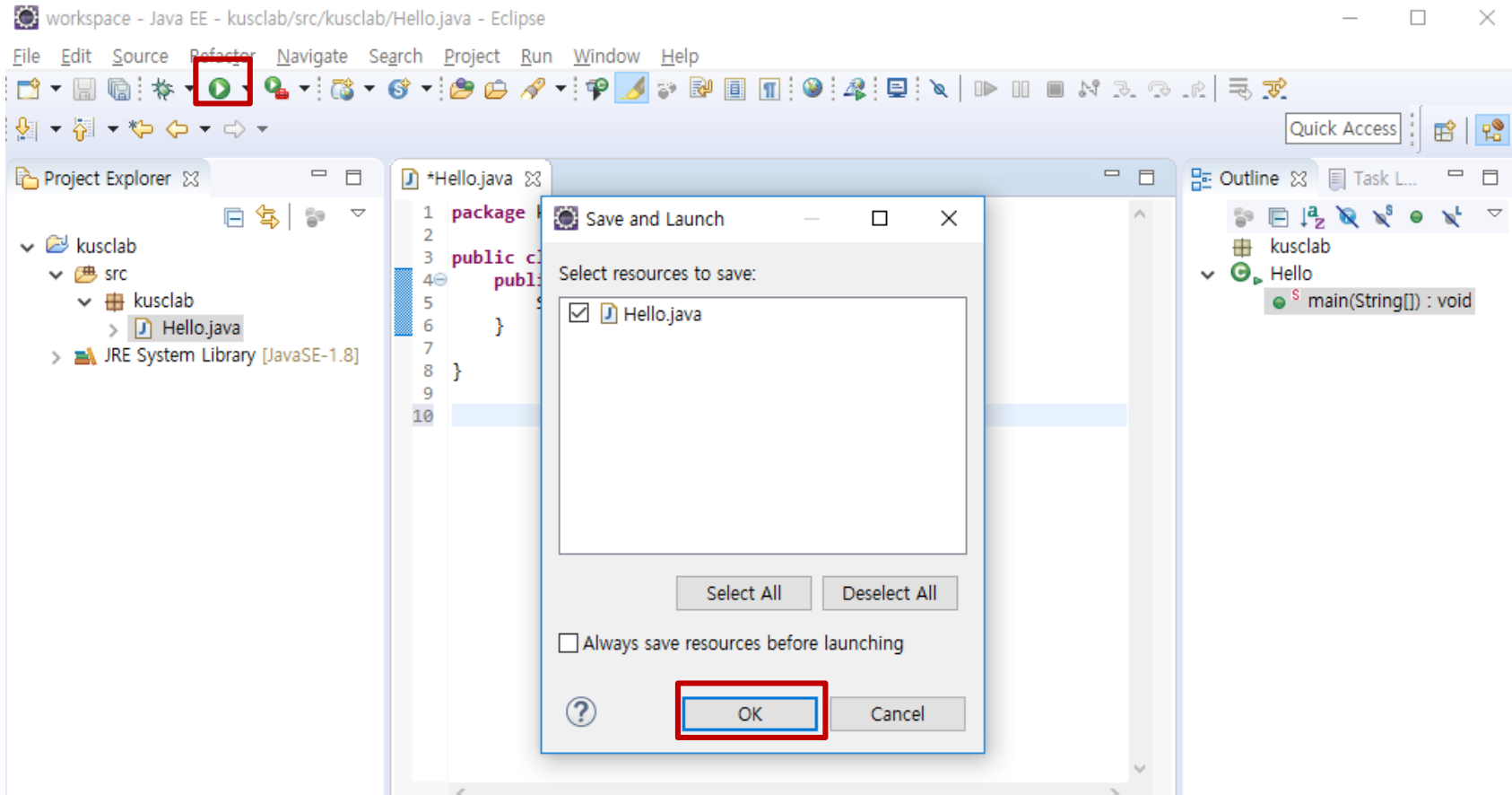
- Eclipse basic tutorial

Type your code

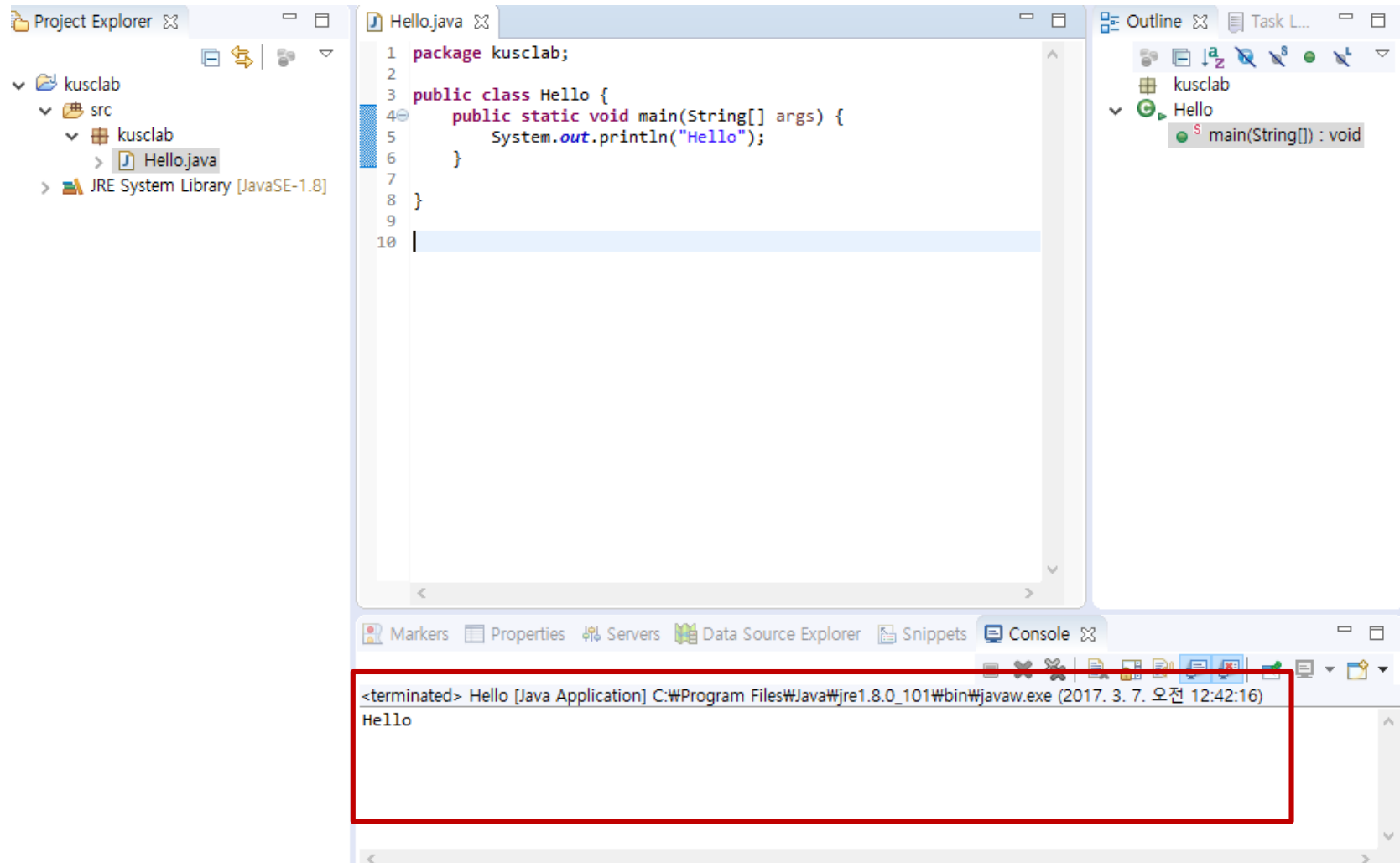


- Eclipse basic tutorial

Run Program



Eclipse basic tutorial

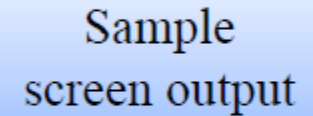


• Simple Java Program

```
import java.util.Scanner;    // Import required classes
public class FirstProgram    // Class definition
{
    public static void main(String [] args)    // Main method definition
    {
        System.out.println("Hello out there.");    // Print to the screen
        System.out.println("I will add two numbers for you.");
        System.out.println("Enter two whole numbers on a line:");
        int n1, n2;    // Integer variable declarations
        Scanner keyboard = new Scanner(System.in);    // A scanner class object
        n1 = keyboard.nextInt();    // Read two integers from the keyboard
        n2 = keyboard.nextInt();
        System.out.println("The sum of those two numbers is");
        System.out.println(n1 + n2);    // Print to the screen
    }
}
```


- Simple Java Program

```
Hello out there.  
I will add two numbers for you.  
Enter two whole numbers on a line:  
12 30  
The sum of those two numbers is  
42
```



Sample
screen output

- **Submission**

과제 제출 e-mail : 2017kudatastructure@gmail.com

수업 담당교과 안내

A반(화/수 13:30~15:00)

이명재 dualespresso@naver.com 010-4916-0944

B반(화/수 15:30~17:00)

최수용 slidingmouse@naver.com 010-9856-8155

C반(목/금 17:30~19:00)

김철진 cjfwls1070@naver.com 010-9258-5476